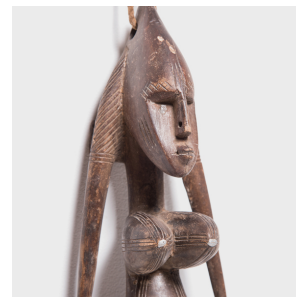
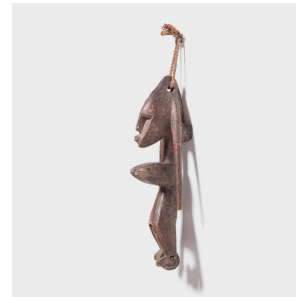

PAGODA RED



BAMBARA HEDDLE PULLEY SCULPTURE

\$780

c. 1950 • Mali • Materials, Wood • Collection #CAA0997

W: 4.5" D: 3.5" H: 13.25"

Heddle pulleys are used in strip-weaving, a traditional art practiced by the Bambara people in which narrow strips are created on small looms. The resulting ribbons of fabric were then stitched together to create larger textiles, including blankets. The weaver's feet operate the heddles during the weaving process.

Carved to a female form, this large, decorative pulley from Mali is a sculptural recreation of a traditional form. In many cases, practical items with a high level of decoration such as this were given as gifts to great artists in honor of their craft.



1740 W. Webster Ave., Chicago, IL 60614 • 773-235-1188 • info@pagodared.com

PAGODARED.COM