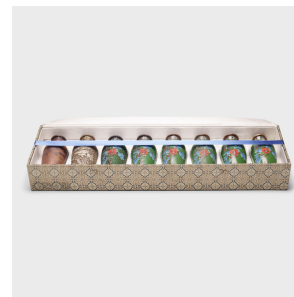
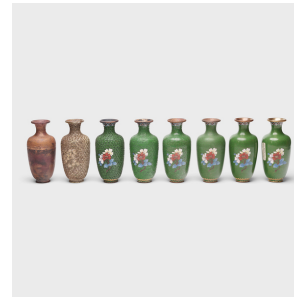


---

# PAGODA RED

---



## SET OF EIGHT CLOISONNÉ PROCESS VASES

**\$880**

Late 20th Century • China • Copper, Enamel • Collection #AHF0017B

H: 6.25" Dia: 2.75"

A decorative technique first adopted in China in the early Ming dynasty (1368-1644), cloisonné is achieved by outlining intricate patterns with thin strips of metal, which are then filled with colorful materials such as vitreous enamel, cut glass or gemstones.

This charming set of eight petite vases demonstrates eight stages of the cloisonné process. Decorated with a graceful flowering branch against a field of green clouds, all eight vases have the same design yet display different states of completion. First, the pattern is drawn with thin wires onto an underlying copper vase form. Continued...



1740 W. Webster Ave., Chicago, IL 60614 • 773-235-1188 • [info@pagodared.com](mailto:info@pagodared.com)

PAGODARED.COM

---

# PAGODA RED

---

## SET OF EIGHT CLOISONNÉ PROCESS VASES

Next, colorful enamels are applied in layers to achieve shading and depth of color. Once fired, the finishing touch of gilt plating is applied to the exposed copper to prevent tarnishing and add a subtle glimmer of gold.

Set includes a padded silk box.

Additional Dimensions:

Diameter of Base: 1.

