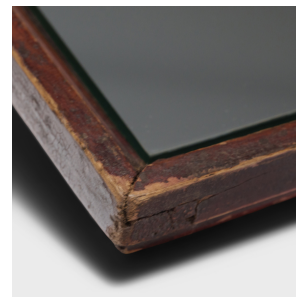

PAGODA RED



PETITE MIRROR TRAY

\$288

c. 1850 • Shanxi, China • Pine, Mirror • Collection #TLC025T

W: 10.25" D: 10.0" H: 1.5"

Simple lines, a modest form, and a layer of hand-brushed lacquer give this petite Qing-dynasty tray a provincial charm that recalls the warmth of home. The beveled frame is brushed with a thin layer of red-brown lacquer, now weathered with time to reveal the light brown color of the pine wood underneath. For added dimension, we've installed a silver mirror to the base to transform the rustic tray into an elevated serving platter, catch-all or wall mirror.



1740 W. Webster Ave., Chicago, IL 60614 • 773-235-1188 • info@pagodared.com

PAGODARED.COM