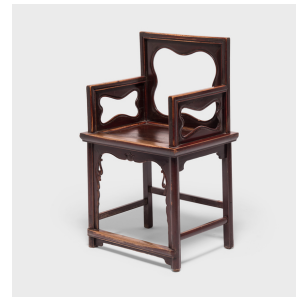
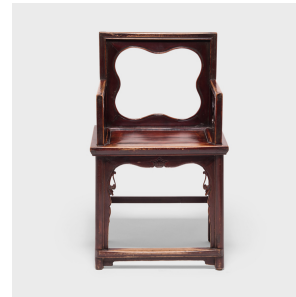

PAGODA RED



PAIR OF QUATREFOIL ROSE CHAIRS

\$7,480

c. 1850 • Shanxi, China • Materials, Walnut, Lacquer • Collection #BJA111

W: 22.25" D: 17.0" H: 37.25"

For many years, rose chairs were thought to have been exclusively used by women due to their floral name. However, they were a universal form of seating, typically used for writing due to their low back and small frame. This pair of 19th-century walnut rose chairs were constructed in China's Shanxi province using traditional mortise and tenon joinery techniques to continuously join the top rail, sides, and legs. The back and sides are kept open with decorative quatrefoil cutouts, a charming detail that softens the chairs' otherwise angular forms. Continued...



1740 W. Webster Ave., Chicago, IL 60614 • 773-235-1188 • info@pagodared.com

PAGODARED.COM

PAGODA RED

PAIR OF QUATREFOIL ROSE CHAIRS

Cloaked in a layer of rich lacquer, the pair has an inimitable warmth and softness that can only be achieved by centuries of use.



1740 W. Webster Ave., Chicago, IL 60614 • 773-235-1188 • info@pagodared.com

PAGODARED.COM