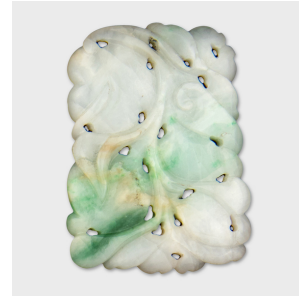


---

# PAGODA RED

---



## MOSS-IN-SNOW JADEITE PENDANT OF PEACHES

**\$280**

20th Century • China • Materials, Jadeite • Collection #AHF0003D

W: 1.5" D: 0.25" H: 2.0"

Valued for its rarity and lustrous appearance, jade (yù) has long been a symbol of excellence, longevity and purity of virtue. Worn as jewelry or as a protective charm, the stone was believed to imbue a person with a clear mind and pure spirit, and to guard against evil spirits and illness.

This lovely jadeite pendant is shaped from a variety known as moss-in-snow, named for the spots of bright green color contrasting the surrounding pale field. The pendant is carved with a reticulated design of peaches and flowers.

Continued...



1740 W. Webster Ave., Chicago, IL 60614 • 773-235-1188 • [info@pagodared.com](mailto:info@pagodared.com)

PAGODARED.COM

---

# PAGODA RED

---

## MOSS-IN-SNOW JADEITE PENDANT OF PEACHES

Growing ripe on the branch, this summer fruit is a common motif in Chinese art and a symbol of longevity and immortality.

