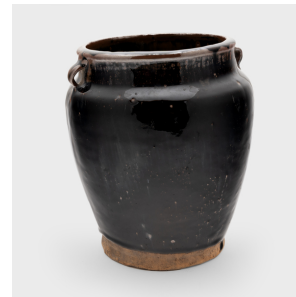

PAGODA RED



DARK GLAZED KITCHEN JAR

\$328

c. 1900 • Shanxi, China • Glaze, Earthenware • Collection #TLB155L

H: 8.0" Dia: 6.5"

A glossy black glaze clings to the form of this slender kitchen jar's banded surface. The glazed vessel dates to the early 20th-century and was used for storing food and condiments in a provincial Qing-dynasty kitchen, as evidenced by its interior glaze. The wide-mouth jar has a squat form with sloped shoulders, a constrained neck, and slightly flared lip. Contrasted by an unfinished base, the blue-black glaze exhibits a rich range of dark colors, clinging to the subtle ridges of the ceramic body to create a pattern of light and dark.



1740 W. Webster Ave., Chicago, IL 60614 • 773-235-1188 • info@pagodared.com

PAGODARED.COM