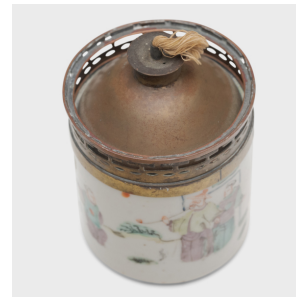

PAGODA RED



FAMILLE VERTE PORCELAIN OPIUM LAMP

\$528

c. 1850 • China • Porcelain, Brass, Enamel • Collection #CDKZ067

H: 4.25" Dia: 3.0"

By the 18th century, opium use had become as central to Chinese social life as taking tea or smoking tobacco, fostering a subculture rich with its own customs, traditions, and exquisitely crafted accoutrements.

Though missing its original glass chimney, this 19th century opium lamp is nevertheless a fantastic collector's item. Unlike most lamps which rest on brass frames, this lamp has a porcelain oil reservoir decorated with pastel enamels in the famille verte style. Hand-painted in a soft palette of green, purple and red, the enameled design depicts a robed scholar-official smoking from a long pipe in a garden, accompanied by two attendants. Continued...



1740 W. Webster Ave., Chicago, IL 60614 • 773-235-1188 • info@pagodared.com

PAGODARED.COM

PAGODA RED

FAMILLE VERTE PORCELAIN OPIUM LAMP

Original glass chimney has been lost.



1740 W. Webster Ave., Chicago, IL 60614 • 773-235-1188 • info@pagodared.com

PAGODARED.COM