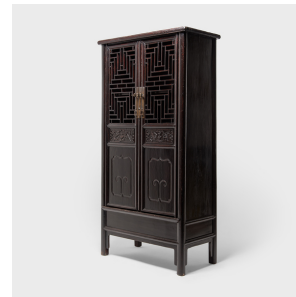
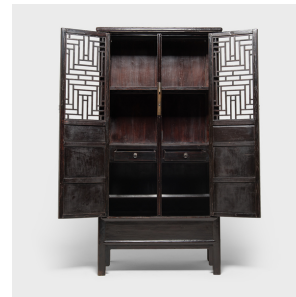
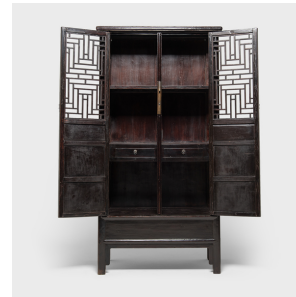

PAGODA RED



DIAMOND LATTICE DISPLAY CABINET

\$6,880

c. 1850 • Northern China, China • Materials, Northern Elmwood, Lacquer • Collection #CADD001

W: 46.0" D: 22.0" H: 90.5"

The focal point of this beautiful 19th-century scholars' display cabinet is undoubtedly the complex diamond-form lattice panels fitted into the tall double doors. Unlike fretwork made by carving or perforating a solid panel, this lattice would have been created by linking short pieces of wood with mortise and tenon joinery, without the use of nails or screws. Beneath the latticework are decorative panels carved with scrolls, censers, and other precious scholars' objects, the like of which would be placed on display on the shelves within. Fitted with three shelves, two drawers, and a secret lower compartment, this impressive cabinet is fantastic as a bookcase, wardrobe, or display case. Continued...



1740 W. Webster Ave., Chicago, IL 60614 • 773-235-1188 • info@pagodared.com

PAGODARED.COM

PAGODA RED

DIAMOND LATTICE DISPLAY CABINET

Additional Dimensions:

Drawers: 13.5"W x 15.75"D x 2.5"H

Top Shelf: 43"W x 20"D x 20"H

Middle Shelf: 43"W x 20"D x 20.25"H

Bottom Shelf: 43"W x 20"D x 21.



1740 W. Webster Ave., Chicago, IL 60614 • 773-235-1188 • info@pagodared.com

PAGODARED.COM