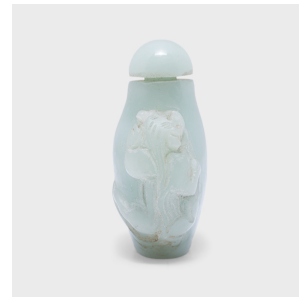

PAGODA RED



CROUCHING TIGER SNUFF BOTTLE

\$168

c. 1900 • China • Jade • Collection #CESB003

W: 2.0" D: 1.0" H: 2.25"

A mixture of finely powdered tobacco, herbs, and spices, snuff was introduced to China in the 17th century by Western diplomats. Initially reserved for ranking members of Qing-dynasty society, the practice provided an opportunity to display one's refined aesthetic through collectible snuff bottles. This petite snuff bottle is carved from an opaque, light blue jade, shaped with a flat, rounded body and a narrow neck and base. The sides are carved with two crouching tigers, a variation of the tiger-head knockers traditionally carved on the shoulders.



1740 W Webster Ave, Chicago, IL 60614 • 773.235.1188 • info@pagodared.com

PAGODARED.COM