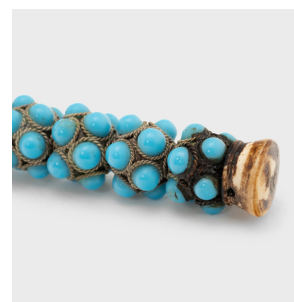
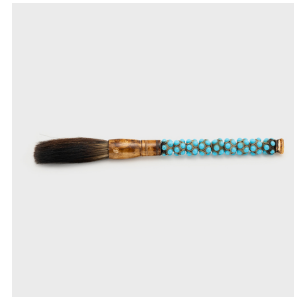

PAGODA RED



CALLIGRAPHY BRUSH WITH BLUE GLASS HANDLE

\$480

20th Century • China • Materials, Metal, Glass, Bone, Hair • Collection #CFC611G

H: 11.25" Dia: 1.0"

Along with paper, ink, and inkstone, the brush is one of the Four Treasures of the scholar's studio. Arguably the most important tool, the brush served as a direct link to the artist's creative spirit. This large calligraphy brush wonderfully recreates traditional forms with carved bone fittings and an intricate handle of colorful beads. Stacked from end to end, the round metal beads are encrusted with luminous faux turquoise glass pebbles, each encircled by a delicate, braided metal trim. With bristles made of horsehair, a calligraphy brush of this proportion is traditionally used for broad, gestural brushstrokes. Continued...



1740 W. Webster Ave., Chicago, IL 60614 • 773-235-1188 • info@pagodared.com

PAGODARED.COM

PAGODA RED

CALLIGRAPHY BRUSH WITH BLUE GLASS HANDLE

From the collection of Frances and Gary Comer.

Minor Cracks to bone fittings.



1740 W. Webster Ave., Chicago, IL 60614 • 773-235-1188 • info@pagodared.com

PAGODARED.COM